



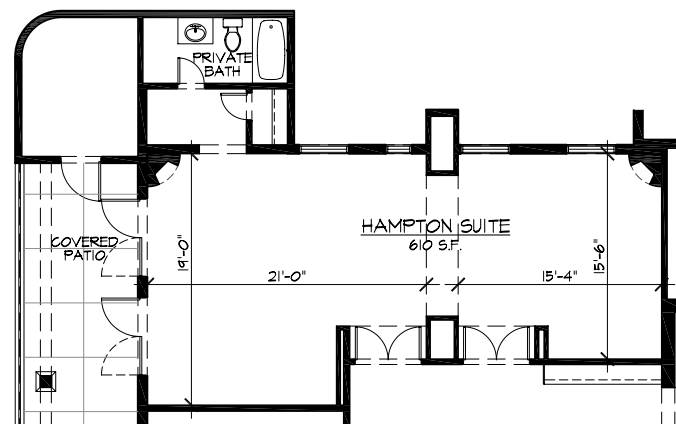
## VENUES

# Hampton Room

Exclusive dining for special celebrations and private meetings or gatherings. The Hampton Room features a small terrace for gatherings, lounge seating, a private restroom, a flat screen television for presentations or slideshows and free wi-fi. This venue is perfect for birthdays, anniversaries, bridal showers, baby showers, rehearsal dinners, luncheons, business meetings and much more.

### SEATING CAPACITY:

Seated Reception: 40 Guests  
Standing Reception: 30 Guests  
Board Room Style: 30 Guests





## VENUES

# Dining Room

Built in 1934, El Chorro's iconic setting at the base of Camelback & Mummy Mountains offers an authentic Arizona desert setting. The restaurant and event venues have been restored and enhanced to further preserve this landmark's rustic charm.

The Gallery & Landmark Rooms are part of the original El Chorro iconic structure and open onto the famed South Patio. Featuring an open floor plan, these rooms are highlighted by expansive views and can be combined to accommodate up to 120 guests.

## GALLERY ROOM

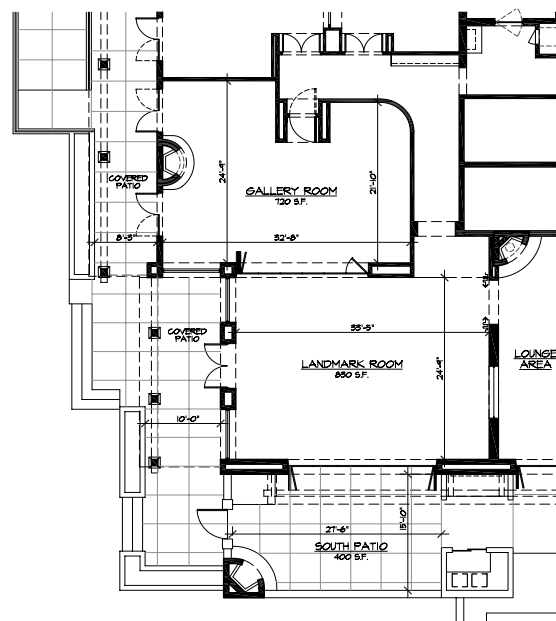
Seating Capacity: 56 Guests

## LANDMARK ROOM

Seating Capacity: 64 Guests

## GALLERY ROOM, LANDMARK ROOM & PATIO

Seating Capacity: 120 Guests





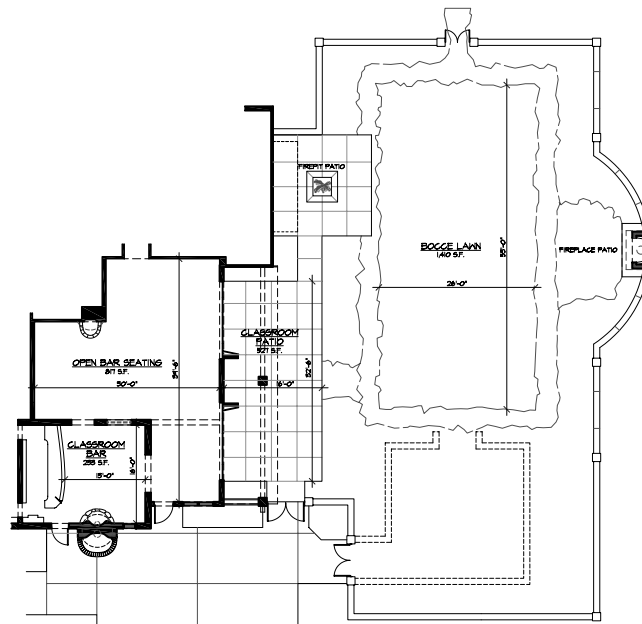
## VENUES

# Classroom Bar

The original bar setting at El Chorro. It has been carefully restored to reflect its legacy décor, and features the iconic copper-top fireplace. This private venue also includes the Lounge, Patio and Bocce Lawn, all within the shadow of Mummy Mountain. It is an authentic Arizona indoor-outdoor setting that can accommodate up to 150 guests.

### SEATING CAPACITY:

Seated Reception Inside:	60 Guests
Standing Reception Inside:	60 Guests
Seated Reception on Lawn:	100 Guests
Standing Inside & Outside Reception	150 Guests







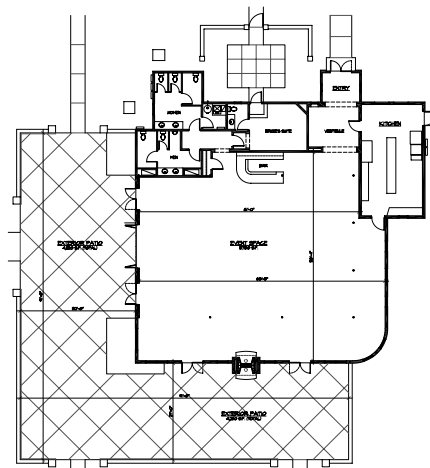
## VENUES

# Casa Paloma

A distinct setting within the El Chorro complex, the pavilion setting opens onto a series of exterior patios, fireplaces and gardens framed by Camelback and Mummy mountains. Casa Paloma can accommodate cocktail functions of up to 300 guests, a sit-down dining experience for 250, or a gathering of 200 with a full stage and dance floor.

### SEATING CAPACITY:

Seated Reception Inside:	250 Guests
Seated Reception with Stage & Dance Floor:	200 Guests
Standing Reception Inside:	300 Guests
Patio Seated Reception:	200 Guests
Patio Standing Reception:	250 Guests
Lawn Seated Reception:	300 Guests
Lawn Standing Reception:	500 Guests





## VENUES

# South Lawn

Perfect for smaller, intimate gatherings the El Chorro South Lawn is adjacent to the famed El Chorro Patio. A unique locale, the South Lawn provides a flexible setting for receptions or events up to 120 guests.

### **SEATING CAPACITIES:**

Wedding Ceremonies: 120 Guests  
Cocktail Receptions: 100 Guests  
Dinner receptions: 100 Guests